

TRIPLE CONCERTO

pour Hautbois, Clarinette, Basson et Orchestre d'Harmonie

Basson
tutti

Francis COITEUX

Allegro

mf *f*

Musical notation for measures 1-5 in bass clef, 3/4 time. Measure 1 starts with a half note G2. Measure 2 has eighth notes G2, A2, B2. Measure 3 has a half note G2. Measure 4 has eighth notes G2, A2, B2. Measure 5 has eighth notes G2, A2, B2, C3.

6

Musical notation for measures 6-10 in bass clef, 3/4 time. Measure 6 has eighth notes G2, A2, B2. Measure 7 has eighth notes G2, A2, B2. Measure 8 has eighth notes G2, A2, B2. Measure 9 has eighth notes G2, A2, B2. Measure 10 has eighth notes G2, A2, B2, C3.

11

A

p *p*

Musical notation for measures 11-17 in bass clef, 3/4 time. Measure 11 has a half note G2. Measure 12 has eighth notes G2, A2, B2. Measure 13 has eighth notes G2, A2, B2. Measure 14 has eighth notes G2, A2, B2. Measure 15 has eighth notes G2, A2, B2. Measure 16 has eighth notes G2, A2, B2. Measure 17 has eighth notes G2, A2, B2, C3.

18

mf *p*

Musical notation for measures 18-23 in bass clef, 3/4 time. Measure 18 has eighth notes G2, A2, B2. Measure 19 has eighth notes G2, A2, B2. Measure 20 has eighth notes G2, A2, B2. Measure 21 has eighth notes G2, A2, B2. Measure 22 has eighth notes G2, A2, B2. Measure 23 has eighth notes G2, A2, B2, C3.

24

B

f

Musical notation for measures 24-29 in bass clef, 3/4 time. Measure 24 has eighth notes G2, A2, B2. Measure 25 has eighth notes G2, A2, B2. Measure 26 has eighth notes G2, A2, B2. Measure 27 has eighth notes G2, A2, B2. Measure 28 has eighth notes G2, A2, B2. Measure 29 has eighth notes G2, A2, B2, C3.

30

p *pp* *mf*

Musical notation for measures 30-35 in bass clef, 3/4 time. Measure 30 has a half note G2. Measure 31 has eighth notes G2, A2, B2. Measure 32 has eighth notes G2, A2, B2. Measure 33 has eighth notes G2, A2, B2. Measure 34 has eighth notes G2, A2, B2. Measure 35 has eighth notes G2, A2, B2, C3.

36

C

f *p*

Musical notation for measures 36-40 in bass clef, 3/4 time. Measure 36 has eighth notes G2, A2, B2. Measure 37 has eighth notes G2, A2, B2. Measure 38 has eighth notes G2, A2, B2. Measure 39 has eighth notes G2, A2, B2. Measure 40 has eighth notes G2, A2, B2, C3.

41

2

Musical notation for measures 41-45 in bass clef, 3/4 time. Measure 41 has eighth notes G2, A2, B2. Measure 42 has eighth notes G2, A2, B2. Measure 43 has eighth notes G2, A2, B2. Measure 44 has eighth notes G2, A2, B2. Measure 45 has eighth notes G2, A2, B2, C3.

47 **D**
mf

55 *f*

60 **E**
p

66 *mf* *p*

71 **F**
p *mf*

76 *f*

80 **G**
p

85 *mf*

91 **H**
p

102 *mf*

108 *p* *mf* *p*

Detailed description: This page of a musical score for Basson tutti contains ten staves of music, numbered 47 to 108. The music is written in bass clef with a key signature of one flat (B-flat). The score is divided into sections by lettered headings: D (measures 47-54), E (measures 60-65), F (measures 71-75), G (measures 80-84), and H (measures 91-108). Measure 55 is the start of a new section. Dynamics include *mf* (mezzo-forte), *f* (forte), *p* (piano), and *pp* (pianissimo). There are various articulations such as accents (>) and slurs. A sixteenth-note triplet is marked with a '6' above it in measure 91. The piece concludes with a final chord in measure 108.

114 **I**

120

126 $\text{♩} = \text{♩}$ (à chaque changement de mesure)

131

136

141

145

149 **J**

160

165

170

175 **K**

p *mf*

187 **L**

p *f*

195

p *p*

203 **M**

p *mf*

208

p

213 **N**

mf

218

f

223 **O**

p

228

f

233

238 **Andantino**

mf *p*

266

Musical staff for bassoon, measures 266-272. The staff shows a melodic line starting with a half note G#4, followed by quarter notes A4, Bb4, and C5. Dynamics include piano (p) and accents.

273

Musical staff for bassoon, measures 273-279. The staff shows a melodic line with a slur over measures 273-275 and a crescendo leading to mezzo-forte (mf), followed by a decrescendo to piano (p).

280

Musical staff for bassoon, measures 280-286. The staff shows a melodic line with a slur over measures 280-281 and a dynamic change from piano-pianissimo (pp) to forte (f). A section marker 'P' is present above the staff.

287

Musical staff for bassoon, measures 287-301. The staff shows a melodic line with a slur over measures 287-291 and a dynamic change to piano (p). A section marker 'Q' is present above the staff.

302

Musical staff for bassoon, measures 302-318. The staff shows a melodic line with a slur over measures 302-318 and a dynamic change to piano-pianissimo (pp). A section marker 'R' is present above the staff.

319

Musical staff for bassoon, measures 319-347. The staff shows a melodic line with a slur over measures 319-347 and a dynamic change to forte (f). Section markers 'R', 'Valse', and 'S' are present above the staff.

348

Musical staff for bassoon, measures 348-354. The staff shows a melodic line with a slur over measures 348-354.

355

Musical staff for bassoon, measures 355-377. The staff shows a melodic line with a slur over measures 355-377 and a dynamic change to piano-pianissimo (pp). A section marker 'T' is present above the staff.

378

Musical staff for bassoon, measures 378-384. The staff shows a melodic line with a slur over measures 378-384.

385

Musical staff for bassoon, measures 385-390. The staff shows a melodic line with a slur over measures 385-390 and a dynamic change to piano (p).

391

Musical staff for bassoon, measures 391-397. The staff shows a melodic line with a slur over measures 391-397 and a dynamic change to piano-pianissimo (pp). A section marker 'U' is present above the staff.

405 **Allegro**
24 **V**

mf

435 *f*

442

449 *mf*

456 **W**
p

463

470 **X**
mf

478 *p*

485 *mf* *p*

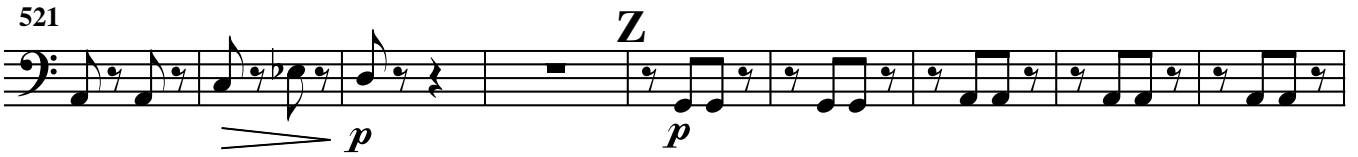
492 **Y**
f

505 *p*

513



521



530



542



550



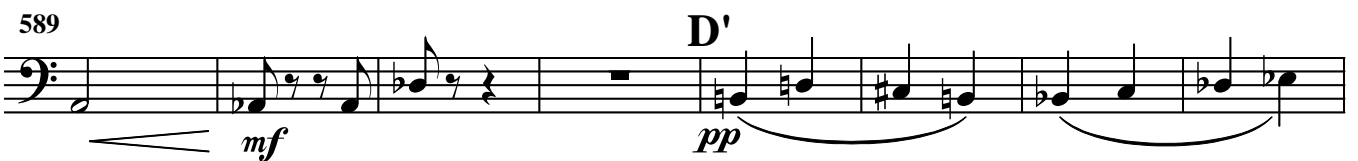
558



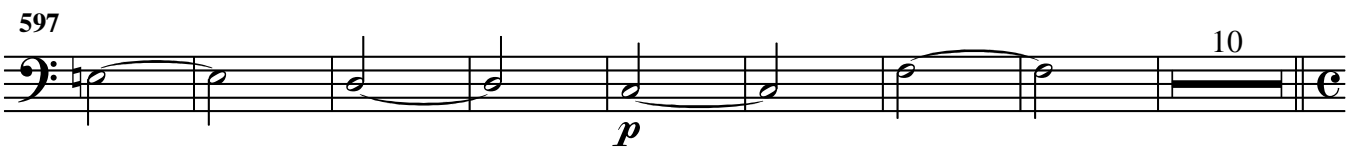
581



589



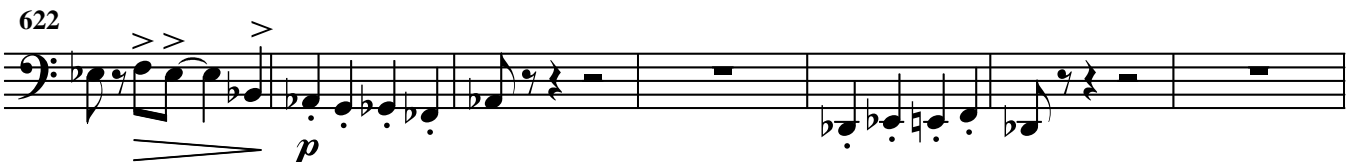
597



615 Più mosso



622



629 *f* *mf*

635 **E'** *p* *mf*

641 *p* *mf* *p*

647

653 **Tempo primo** *f* *f* *p*

661 *f* 3

669 **Presto** *f* *rall...*

.....

Également de Francis COITEUX

pour une ambiance festive

JEUX DE PLAGE A MARÉE BASSE

Recueil de 12 duos de Bassons

Éditions Robert MARTIN

.....