

# SAINT - LOUIS DE FRANCE

Oratorio pour Récitant, Solistes, Choeur, Choeur d'enfants, Orchestre et Orgue.

## Percussion 1 : Timbales

Gong (N° 7 seulement)

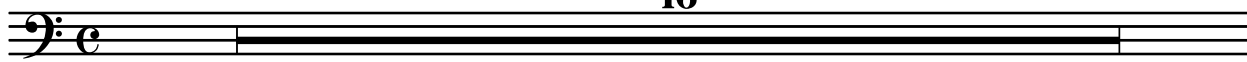
Livret  
Sylvie PAQUET

Musique  
Francis COITEUX

### N° 1 Prologue

Andante religioso

16



### Texte récitant

Allegro moderato ardito

2



### Texte récitant

Andante dolce



# N° 2

## La lumière de l'Orient

Moderato ma non troppo

*f*

A 10 B C 11 *f* *Meno mosso*

D a tempo 9 E *Meno mosso* 12 F a tempo 8

G *Meno mosso* 12 H a tempo 8

# N° 3

## Mise en garde

Allegro deciso

2 8 A 10

*f*

*f*

Moderato

B 9 12 C 3

*p*

Meno mosso

5 accel. 2

*f*

Allegro deciso

Moderato a poco maestoso

15 D 11 accel. 2

*f*

Allegro deciso

Moderato con tenerezza

10 E 9 accel. 2

*f*

Allegro deciso

Meno mosso

2

*f*

# N° 4 La Croisade

Allegretto a poco agitato

10 A 2

*p*

Detailed description: This is the first musical staff for 'La Croisade'. It is written in bass clef with a common time signature. It begins with a rest for 10 measures, followed by a half note G2, a quarter note A2, and another half note G2. There are two fermatas over the first and last notes. The dynamic is *p*.

8 B 7 C 2

Detailed description: This is the second musical staff. It starts with a rest for 8 measures, followed by a half note B1, a quarter note A1, and another half note B1. There are two fermatas over the first and last notes. It then has a rest for 7 measures, followed by a half note C2, a quarter note B1, and another half note C2. There are two fermatas over the first and last notes. The dynamic is *p*.

Andante cantabile

Tempo primo, brillante

3 6 D 11

*f*

Detailed description: This is the third musical staff. It begins with a rest for 3 measures, followed by a half note D2, a quarter note C2, and another half note D2. There are two fermatas over the first and last notes. It then has a rest for 6 measures, followed by a half note D2, a quarter note C2, and another half note D2. There are two fermatas over the first and last notes. The dynamic is *f*.

6 > E 2 2

Detailed description: This is the fourth musical staff. It starts with a rest for 6 measures, followed by a half note E2, a quarter note D2, and another half note E2. There are two fermatas over the first and last notes. It then has a rest for 2 measures, followed by a half note E2, a quarter note D2, and another half note E2. There are two fermatas over the first and last notes. The dynamic is *f*.

> F 2 >> > >

*ff*

Detailed description: This is the fifth musical staff. It begins with a rest for 2 measures, followed by a half note F2, a quarter note E2, and another half note F2. There are two fermatas over the first and last notes. It then has a rest for 2 measures, followed by a half note F2, a quarter note E2, and another half note F2. There are two fermatas over the first and last notes. The dynamic is *ff*.

# N° 5 Les Barons

Andantino espressivo Allegro tumultuoso

7 accel. 11 A 8 B 9

*f*

Detailed description: This is the first musical staff for 'Les Barons'. It is written in bass clef with a common time signature. It begins with a rest for 7 measures, followed by a half note A2, a quarter note G2, and another half note A2. There are two fermatas over the first and last notes. It then has a rest for 11 measures, followed by a half note A2, a quarter note G2, and another half note A2. There are two fermatas over the first and last notes. The dynamic is *f*.

C 9 > > D 8

*f*

Detailed description: This is the second musical staff. It starts with a rest for 9 measures, followed by a half note C2, a quarter note B1, and another half note C2. There are two fermatas over the first and last notes. It then has a rest for 9 measures, followed by a half note C2, a quarter note B1, and another half note C2. There are two fermatas over the first and last notes. The dynamic is *f*.

E 16 > > F 8 G 9

*ff*

Detailed description: This is the third musical staff. It begins with a rest for 16 measures, followed by a half note E2, a quarter note D2, and another half note E2. There are two fermatas over the first and last notes. It then has a rest for 8 measures, followed by a half note E2, a quarter note D2, and another half note E2. There are two fermatas over the first and last notes. It then has a rest for 9 measures, followed by a half note E2, a quarter note D2, and another half note E2. There are two fermatas over the first and last notes. The dynamic is *ff*.

**N° 6**  
*Le Dauphin*  
**TACET**

**N° 7**  
*Le Sacre*

Energico a poco maestoso

6 > 3 3 > A 8 B

Gong

Grandioso

Andante nobile

Grandioso

Andante nobile

9 8 C 8 10 7

Energico a poco maestoso

D 5

Gong

E

Timbales

Andante grandioso

5

Energico a poco maestoso

6

# N° 8

## Interlude

**Allegro agitato**

8 A 8 B 11 C 8 *f*

**Allegro ardito**

8 D 9 E 5

# N° 9

## Le Sire de Joinville

### TACET

# N° 10

## Souvenirs du jeune roi

**Allegro scherzando**

**Moderato a poco maestoso**

9 A 5 7 B 10 C 9

*pp* **Allegro scherzando** *f*

*p* E *p*

12 F 3 8 *mf* *mf*

7 G 3 5 *p* *p*

# N° 11

## Souveraine Blanche de Castille

**Allegretto con spirito**

11 A 3 2

*f*

**Andante nostalgico**

**Allegretto deciso**

B 15 11 C 7 6

**Andante nostalgico**

11 D 9 accel. 5

*f*

# N° 12

## La justice du roi

Allegro con allegrezza Andante nobile Allegro con allegrezza

8 12 1 2 3 4 5

*f* *mf*

6 7 8 A

*mf*

4 8 B 9

*mf*

Andante religioso Allegro con allegrezza

5 1 2 3 4 5 6

*f* *mf*

3

Andante nobile

Allegro deciso

9 2 3

*f*

C 5 D 2



# N° 13

## Arbitre de l'Europe

Andante religioso Poco più mosso, con nobile

12 12 A 6 B 6

*mf*

8 C *Più vivo* 2

*f*

# N° 14

## Le prévôt Etienne Boileau

Moderato energico

9 A 7 B 3

*f*

a poco più mosso

19 C 7 6 *rit.*

*f* *p*

Tempo primo

*f* *f*

# N° 15

## Le "Livre des métiers"

Allegro scherzando

13 8 A 10

*mf*

B 16 C 16 D 16 E 11

F 8

*mf* *f*

# N° 16

"Une nation Chrétienne"  
TACET

# N° 17

La Sorbonne

Allegretto con allegrezza

The musical score for Percussion 1, N° 17 "La Sorbonne", is written on seven staves in bass clef with a common time signature. The piece is marked "Allegretto con allegrezza". The score consists of several measures, each containing a specific rhythmic pattern indicated by a number above the staff. The patterns are: 6, A, 13, B, 5, C, 6, D, 7, E, 7, F, 3, 5, and G. The dynamics are marked as *f* (forte) and *mf* (mezzo-forte). The score ends with a double bar line.

# N° 18

## Nouvelle croisade

Moderato a poco maestoso      Meno mosso      Tempo primo

12      15      A      4

Meno mosso

8      Più mosso, energico

*mf*      *f*

2

*mf*

*rall...*      Più lento

18      B      16      C      9

Poco più mosso

D      4

*mf*      *p*

# N° 19

## Rivage funeste

Lento doloroso con semplice

14      A      14      B      3      5

*f*

C      8      D      8      E      5

*mf* < *f*

# N° 20

## Un roi Saint

Andante cantabile espressivo

10 A 7 B 7

The first staff of music is in bass clef with a common time signature (C). It begins with four measures of whole notes, each with a fermata above it. The fifth measure contains a ten-measure rest, followed by a seven-measure rest, a seven-measure rest, and another seven-measure rest. The piece ends with a double bar line.

Allegro energico brillante

4 f

The second staff of music is in bass clef with a common time signature (C). It starts with a four-measure rest, followed by a series of eighth notes. The piece ends with a two-measure rest.

C ff

The third staff of music is in bass clef with a common time signature (C). It continues the eighth-note pattern from the previous staff. The piece ends with a fortissimo (ff) dynamic marking.

2 Più mosso

The fourth staff of music is in bass clef with a common time signature (C). It begins with a two-measure rest, followed by eighth notes. The tempo is marked 'Più mosso'.

7 f 3 D 5

The fifth staff of music is in bass clef with a common time signature (C). It features a seven-measure rest, followed by eighth notes. The piece ends with a fortissimo (f) dynamic marking.

Meno mosso, grandioso

3 f E

The sixth staff of music is in bass clef with a common time signature (C). It starts with a three-measure rest, followed by eighth notes. The piece ends with a fortissimo (f) dynamic marking.

ff

The seventh staff of music is in bass clef with a common time signature (C). It features a series of eighth notes. The piece ends with a fortissimo (ff) dynamic marking.