

# SAINT - LOUIS DE FRANCE

Oratorio pour Récitant, Solistes, Choeur, Choeur d'enfants, Orchestre et Orgue.

## Trombone 1

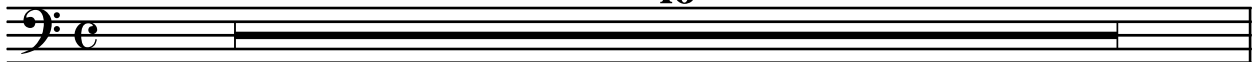
Livret  
Sylvie PAQUET

Musique  
Francis COITEUX

### N° 1 *Prologue*

Andante religioso

16



#### *Texte récitant*

Allegro moderato ardito

#### *Texte récitant*

Andante dolce

# N° 2

## La lumière de l'Orient

Moderato ma non troppo

First staff of music in bass clef, common time. It begins with a dynamic marking of *f*. The melody consists of eighth and quarter notes with various accidentals, including sharps and flats, and some notes are beamed together.

Second staff of music in bass clef, common time. It features a dynamic marking of *mf* and includes a section labeled **A** with a measure rest of 9 measures. The music continues with eighth and quarter notes.

Third staff of music in bass clef, common time. It features a dynamic marking of *f* and includes a section labeled **B**. The melody continues with eighth and quarter notes.

Fourth staff of music in bass clef, common time. It starts with a dynamic marking of *mf* and includes a section labeled **C** with a measure rest of 11 measures. Above the staff, the tempo changes to **Meno mosso** and then **D a tempo**. The staff contains a measure rest of 4 measures before section C.

Fifth staff of music in bass clef, common time. It starts with a dynamic marking of *p* and includes a section labeled **E** with a measure rest of 12 measures. Above the staff, the tempo changes to **Meno mosso** and then **F a tempo**. The staff contains a measure rest of 4 measures before section E.

Sixth staff of music in bass clef, common time. It starts with a dynamic marking of *p* and includes a section labeled **G** with a measure rest of 12 measures. Above the staff, the tempo changes to **Meno mosso** and then **H a tempo**. The staff contains a measure rest of 3 measures before section G, and a measure rest of 8 measures before section H.

# N° 3

## Mise en garde

**Allegro deciso**

**f**

**A 16 B 9 C 4**

**Moderato**

**mf**

**Meno mosso 6 accel. Allegro deciso 5 Moderato a poco maestoso 13**

**mf**

**D 12 accel. Allegro deciso 5 Moderato con tenerezza 10**

**E 10 accel. Allegro deciso 5 Meno mosso**

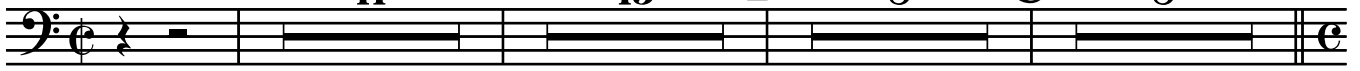
**f**

# N° 4

## La Croisade

Allegretto a poco agitato

11 A 13 B 8 C 8



A musical staff in bass clef with a common time signature. It contains several rests of varying lengths. Above the staff, the numbers 11, A, 13, B, 8, and C are placed above specific measures. The staff ends with a double bar line and a repeat sign.

Andante cantabile

3 D 6

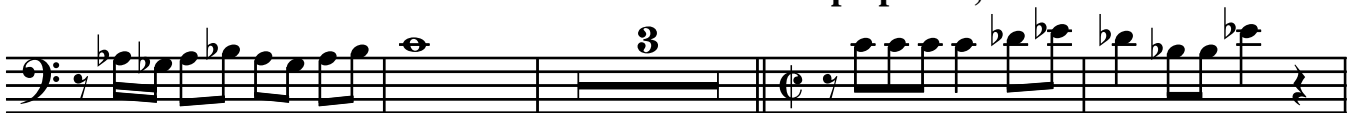


*mf*

A musical staff in bass clef with a common time signature. It features a triplet of eighth notes followed by a half note, and then a half note. Above the staff, the numbers 3 and D are placed above specific measures. The staff ends with a double bar line. The dynamic marking *mf* is written below the staff.

Tempo primo, brillante


3



*mf* *f* *mf*

A musical staff in bass clef with a common time signature. It contains a triplet of eighth notes, followed by a half note, and then a triplet of eighth notes. Above the staff, the number 3 is placed above a specific measure. The staff ends with a double bar line. The dynamic markings *mf*, *f*, and *mf* are written below the staff.

4



*ff* *f*


A musical staff in bass clef with a common time signature. It contains a quarter note followed by a triplet of eighth notes, and then a quarter note. Above the staff, the number 4 is placed above a specific measure. The staff ends with a double bar line. The dynamic markings *ff* and *f* are written below the staff.

E 2



A musical staff in bass clef with a common time signature. It contains a quarter note followed by a triplet of eighth notes, and then a quarter note. Above the staff, the letter E and the number 2 are placed above specific measures. The staff ends with a double bar line.

F



*ff*

A musical staff in bass clef with a common time signature. It contains a quarter note followed by a triplet of eighth notes, and then a quarter note. Above the staff, the letter F is placed above a specific measure. The staff ends with a double bar line. The dynamic marking *ff* is written below the staff.



A musical staff in bass clef with a common time signature. It contains a quarter note followed by a triplet of eighth notes, and then a quarter note. Above the staff, the number 2 is placed above a specific measure. The staff ends with a double bar line.

# N° 5

## Les Barons

Andantino espressivo

6 *accelerando poco a poco...*

Allegro tumultuoso

3

First staff of music, bass clef, common time. It begins with a 6-measure rest, followed by a melodic line starting with a mezzo-forte (*mf*) dynamic and ending with a forte (*f*) dynamic. A 3-measure rest follows.

Second staff of music, bass clef, common time. It starts with a 4-measure rest, followed by a melodic line with *mf* and *f* dynamics. A section labeled 'A' with a 4-measure rest follows, ending with a *f* dynamic.

Third staff of music, bass clef, common time. It begins with a 4-measure rest, followed by a melodic line with accents and *f* dynamics. A section labeled 'B' with a 9-measure rest follows, ending with a *f* dynamic.

Fourth staff of music, bass clef, common time. It starts with a 4-measure rest, followed by a melodic line with accents and *f* dynamics. A section labeled 'D' with a 4-measure rest follows.

Fifth staff of music, bass clef, common time. It begins with a 4-measure rest, followed by a melodic line with accents and *mf* dynamics. A section labeled 'E' with an 11-measure rest follows, ending with a 2-measure rest.

Sixth staff of music, bass clef, common time. It starts with a 4-measure rest, followed by a melodic line with accents and *f* dynamics. A section labeled 'F' with a 4-measure rest follows.

Seventh staff of music, bass clef, common time. It begins with a 4-measure rest, followed by a melodic line with accents and *f* dynamics. A section labeled 'G' with an 8-measure rest follows, ending with *ff* and *f* dynamics.

# N° 6

## Le Dauphin

TACET

# N° 7 Le Sacre

Energico a poco maestoso

Grandioso 9      Andante nobile 8      C 8      Grandioso 10      Andante nobile 7

D 5      Energico a poco maestoso

E 2      Andante grandioso

Energico a poco maestoso

# N° 8 Interlude

**Allegro agitato**

8 A 8 B 11 C 4  $\flat e$   $\natural e$

*mf*

*f*

**Allegro ardito**

8 D

*f*

*p*

E *rall...*

*pp*

# N° 9 Le Sire de Joinville

**Andante cantabile**

12 A 7 B 7 C

*mf*

9 D 7 E 6

*mf*

# N° 10

## Souvenirs du jeune roi

Allegro scherzando

*f* *mf*

Moderato a poco maestoso

*f* *p*

*mf*

Allegro scherzando

*mf*

# N° 11

## Souveraine Blanche de Castille

Allegretto con spirito

*f*

*mf*

*mf* *f*

Andante nostalgico

Allegretto deciso

*f* *mf*

Andante nostalgico

*mf* *accel.*

Allegretto deciso

*f* *mf*



# N° 12

## La justice du roi

Allegro con allegrezza

Andante nobile

8 9

*p*

Allegro con allegrezza

7 A 3

*mf* *mf*

12 B 3

*mf* *f*

Andante religioso Allegro con allegrezza

2 5 10

*mf*

Andante nobile

3 4 7

*mf*

C D

*f*

# N° 13

## Arbitre de l'Europe

Andante religioso Poco più mosso, con nobile

12 *p* *mf*

4 A 7 B

4 Più vivo 8 C 3 *f*

# N° 14

## Le prévôt Etienne Boileau

Moderato energico

*f* *mf*

3 A *f* 3

B *f* a poco più mosso 18

C 11 *p* *f* *rit.* 5 *mf* *f*

# N° 15

## Le "Livre des métiers"

Allegro scherzando

Musical score for Trombone 1, N° 15 "Le Livre des métiers". The score is in bass clef with a key signature of one flat (B-flat) and a 6/8 time signature. It consists of six staves of music. The first staff begins with a dynamic marking of *f* and a measure rest of 8. The second staff has a dynamic marking of *mf*. The third staff contains section markers **A** and **2**, with a dynamic marking of *f*. The fourth staff contains section markers **B** (16), **C** (16), and **D** (16). The fifth staff contains section markers **E** (6) and **F**, with dynamic markings of *f* and *mf*. The sixth staff ends with a dynamic marking of *f*.

# N° 16

## "Une nation Chrétienne"

Lento espressivo

Musical score for Trombone 1, N° 16 "Une nation Chrétienne". The score is in bass clef with a key signature of one flat (B-flat) and a common time signature (C). It consists of three staves of music. The first staff begins with a dynamic marking of *mf* and contains section markers **A** (8) and **B** (6). The second staff contains section markers **C** (8) and **D** (3), with a dynamic marking of *f*. The third staff concludes the piece with a final dynamic marking of *f*.

# N° 17

## La Sorbonne

Allegretto con allegrezza

4 *f* *mf* 4

*f* A 5 *mf* >

8 B 6 C 8 *p* *mf*

D 8 E 3 *mf* < *f*

F 12 G 6 *f* < *ff*

# N° 18

## *Nouvelle croisade*

Moderato a poco maestoso

*f* *mf*

4 **Meno mosso** 15 **A** 4 **Tempo primo** **Meno mosso** 8

**Più mosso, energico**

*mf* *f*

*mf* *rall...*

**Più lento** 18 **B** 16 **C** 9 **D** **Poco più mosso** 7

# N° 19

## *Rivage funeste*

Lento doloroso con semplice

14 **A** 14 **B** 3

*mf* *f*

*f* **C** 9

*f* *f* **D** 7

*f* **E** 3

# N° 20

## Un roi Saint

Andante cantabile espressivo

Allegro energico brillante

Più mosso

Meno mosso, grandioso