

# SAINT - LOUIS DE FRANCE

Oratorio pour Récitant, Solistes, Choeur, Choeur d'enfants, Orchestre et Orgue.

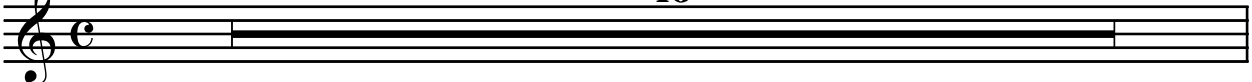
Cor en Fa 2

Livret  
Sylvie PAQUET

Musique  
Francis COITEUX

## N° 1 Prologue

Andante religioso 16




*Texte récitant*

Allegro moderato ardito



*Texte récitant*

Andante dolce



# N° 2

## La lumière de l'Orient

Moderato ma non troppo

*f*

**A** 8

*mf*

**B**

*f*

**C** 4 **Meno mosso** 11 **D** a tempo

*mf*

**E** 4 **Meno mosso** 12 **F** a tempo

*p* *mf*

**G** 4 **Meno mosso** 12 **H** a tempo 8

*p*

# N° 3

## Mise en garde

**Allegro deciso** 12 **A** 4

**Moderato** 10 **B** 9 13 **C** 4 **Meno mosso** 6 *accel.*

**Allegro deciso** 5 **Moderato a poco maestoso** 15 **D** 12 *accel.*

**Allegro deciso** 5 **Moderato con tenerezza** 10 **E** 10 *accel.*

**Allegro deciso** 5 **Meno mosso**

*mf*

*f*

# N° 4

## La Croisade

Allegretto a poco agitato

11 A 13 B 8 C 8

This staff shows the first section of the piece. It begins with a treble clef, a common time signature (C), and a key signature of one flat (Bb). The music consists of a series of rests, with the durations 11, 13, 8, and 8 indicated above the staff. The section is labeled with letters A, B, and C. The staff ends with a double bar line and a common time signature (C).

Andante cantabile

4 D 11

*mf*

This staff shows the second section. It begins with a treble clef, a common time signature (C), and a key signature of one flat (Bb). The music starts with a rest of 4 measures, followed by a melodic line. The section is labeled with the letter D and a duration of 11 measures. The dynamic marking *mf* is present. The staff ends with a double bar line and a common time signature (C).

Tempo primo, brillante

*mf* *f*

This staff shows the third section. It begins with a treble clef, a common time signature (C), and a key signature of one flat (Bb). The music features a melodic line with dynamic markings *mf* and *f*. The staff ends with a double bar line and a common time signature (C).

E

This staff shows the fourth section. It begins with a treble clef, a common time signature (C), and a key signature of one flat (Bb). The music consists of a series of eighth notes. The section is labeled with the letter E. The staff ends with a double bar line and a common time signature (C).

2

2

This staff shows the fifth section. It begins with a treble clef, a common time signature (C), and a key signature of one flat (Bb). The music consists of a series of eighth notes. The section is labeled with the number 2. The staff ends with a double bar line and a common time signature (C).

F

*ff* *ff*

This staff shows the sixth section. It begins with a treble clef, a common time signature (C), and a key signature of one flat (Bb). The music consists of a series of eighth notes. The section is labeled with the letter F and dynamic markings *ff*. The staff ends with a double bar line and a common time signature (C).

# N° 5

## Les Barons

Andantino espressivo Allegro tumultuoso

Musical score for 'Les Barons' in C major, 2/4 time. The score consists of seven staves of music. The first staff begins with a 7-measure rest, followed by an acceleration ('accel.') and a 4-measure rest. The music then begins with a mezzo-forte (*mf*) dynamic. The second staff contains measures 3, 4, 5, and 6, with dynamics *f* and *f*. The third staff contains measures 7, 8, 9, and 10, with dynamics *mf* and *mf*. The fourth staff contains measures 11, 12, 13, and 14, with dynamics *ff* and *f*. The fifth staff contains measures 15, 16, 17, and 18, with dynamics *f*, *ff*, and *f*. The sixth staff contains measures 19, 20, 21, and 22, with dynamics *ff* and *f*. The seventh staff contains measures 23, 24, 25, and 26, with dynamics *ff* and *f*. The score is marked with various dynamics: *mf*, *f*, *ff*, and includes accents and slurs.

# N° 6

## Le Dauphin

Andantino cantabile

Musical score for 'Le Dauphin' in C major, 2/4 time. The score consists of three staves of music. The first staff begins with a 12-measure rest, followed by a mezzo-forte (*mf*) dynamic. The second staff contains measures 13, 14, 15, and 16, with dynamics *p* and *mf*. The third staff contains measures 17, 18, 19, and 20, with dynamics *mf* and *f*. The score is marked with various dynamics: *p*, *mf*, and *f*, and includes slurs.

# N° 7

## Le Sacre

Energico a poco maestoso

Energico a poco maestoso

*quasi cloches*

Andante grandioso

*mf*

Energico a poco maestoso

# N° 8

## Interlude

Allegro agitato

8 A 8 B 11 C 7

Allegro ardito

3 8 D

6 E

*p* *rall...* *pp*

# N° 9

## Le Sire de Joinville : TACET

# N° 10

## Souvenirs du jeune roi

Allegro scherzando

4 A 5

*f* *mf*

Moderato a poco maestoso

2

*f* *p*

B 9 C

*p*

4 D

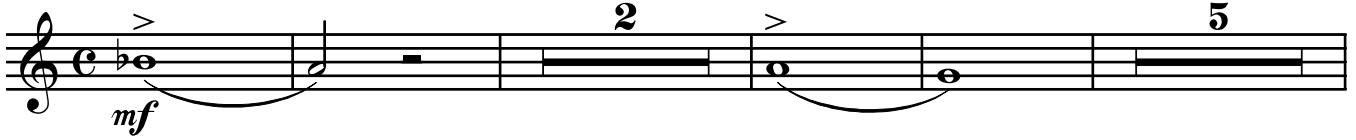
Allegro scherzando

21 E 17 F 20 G 9

# N° 11

## Souveraine Blanche de Castille

**Allegretto con spirito**



**Andante nostalgico**



**Allegretto deciso**



**Allegretto deciso**





# N° 12

## La justice du roi

**Allegro con allegrezza** 8      **Andante nobile** 12      **Allegro con allegrezza** 10 **A** 10

**Andante religioso** 5      **Allegro con allegrezza** 10

**Andante nobile** 8

**Allegro deciso** 7      **C** 5      **D** 8

## N° 13

### Arbitre de l'Europe

Andante religioso Poco più mosso, con nobile

## N° 14

### Le prévôt Etienne Boileau

Moderato energico

# N° 15

## Le "Livre des métiers"

Allegro scherzando

Musical score for N° 15, Le "Livre des métiers". The score is written in treble clef with a key signature of one flat (Bb) and a 6/8 time signature. It consists of six staves of music. The first staff begins with a dynamic marking of *f* and features a series of eighth notes with accents. The second staff starts with a six-measure rest, followed by a dynamic marking of *mf*. The third staff begins with a dynamic marking of *f* and includes a section labeled 'A' with a four-measure rest at the end. The fourth staff contains sections labeled 'B' (16 measures), 'C' (16 measures), 'D' (14 measures), and 'E', with a dynamic marking of *f* starting at the beginning of section 'E'. The fifth staff includes a six-measure rest and a section labeled 'F' with a dynamic marking of *mf*. The sixth staff concludes the piece with a dynamic marking of *f* and a fermata over the final note.

# N° 16

## "Une nation Chrétienne"

Lento espressivo

Musical score for N° 16, "Une nation Chrétienne". The score is written in treble clef with a key signature of one flat (Bb) and a common time signature (C). It consists of two staves of music. The first staff begins with a dynamic marking of *f* and features a series of eighth notes with accents. The second staff starts with a dynamic marking of *f* and includes sections labeled 'A' (8 measures), 'B' (8 measures), 'C' (8 measures), and 'D' (3 measures), with a dynamic marking of *f* starting at the beginning of section 'A'. The piece concludes with a fermata over the final note.

# N° 17

## La Sorbonne

Allegretto con allegrezza

*f*

**2**

**3** **A**

*f* *mf*

**8** **B**

*p* *f*

*mf*

**C** **8** **D** **8** **E**

*mf*

**F**

*f* *mf*

**4**

*f*

**G**

*ff*

*ff*

# N° 18

## Nouvelle croisade

Moderato a poco maestoso

Più mosso, energico

# N° 19

## *Rivage funeste*

Lento doloroso, con semplice



14 A 12 B

*p* *mf*

*f*

C 9 D 7

E 3

# N° 20

## Un roi Saint

Andante cantabile espressivo

10 A 2

f > mf 2 B 2

Allegro energico brillante

2

C ff

Più mosso

9 mf

D

Meno mosso, grandioso

6 f E