

Saxophone Baryton **LAPONILS**

Mib

Conte musical pour Voix d'enfants et Orchestre

(à défaut de Basson ou Clarinette-basse)

Tournes prévues aux pages impaires : 1 - 3 - 5 ...

Francis COITEUX

N° 1 - Prélude

Andante a poco maestoso ♩ = 92

A



10

B



19

C



29



N° 2 - Le sermon

Moderato ♩ = 76

37

A



56

B

8



72

C



© by Édition LE GALION

Courriel : edition.legalion@orange.fr

Oeuvre protégée - All rights reserved

N° 3 - La repentance

Valse lente ♩ = 120

79 **A** 4 *mf*

91 **B** 4

103 **C** 8 **D** *mf*

117 *accelerando poco a poco jusqu'à la fin.....* **E** *f*

125 **F** *ff*

132

The musical score for 'La repentance' is written in 3/4 time with a tempo of 120 beats per minute. It consists of six staves of music. The first staff (measures 79-90) is marked *mf* and features a 4-measure rest labeled 'A'. The second staff (measures 91-102) features a 4-measure rest labeled 'B'. The third staff (measures 103-116) is marked *mf* and features an 8-measure rest labeled 'C' and a 4-measure rest labeled 'D'. The fourth staff (measures 117-124) is marked *f* and includes the instruction 'accelerando poco a poco jusqu'à la fin.....' and a 4-measure rest labeled 'E'. The fifth staff (measures 125-131) is marked *ff* and features a 4-measure rest labeled 'F'. The sixth staff (measures 132-139) concludes the piece with a final cadence.

N° 4 - Ballet des oies domestiques

Allegretto ♩ = 100

140 8 **A** 8 **B** 2 *f*

162 **C** *mf*

171 **D** *f*

The musical score for 'Ballet des oies domestiques' is written in common time (C) with a tempo of 100 beats per minute. It consists of three staves of music. The first staff (measures 140-161) is marked *f* and features an 8-measure rest labeled 'A', another 8-measure rest labeled 'B', and a 2-measure rest. The second staff (measures 162-170) is marked *mf* and features a 4-measure rest labeled 'C'. The third staff (measures 171-189) is marked *f* and features a 4-measure rest labeled 'D'.

176 *mf*

180 **E** *f*

184 *mf*

N° 5 - Les oies sauvages

Valse $\text{♩} = 66$

188 *mf* *f*

198 *f* **A** 8

212 *f* *mf* *f*

219 **B** 12 **C** *f* 8

245 *f* *mf* **D** 5

257 **E**
p

267
mf \rightrightarrows *f*

N° 6 - Voyage mouvementé
Sempre valse $\text{♩} = 66$

277
mf \rightrightarrows *f* *attacca*

286

296 **A**
mf

305 **B**

315

325 **C**
f \rightrightarrows *mf*

334 **D** 3
f

345
ff

N° 7 - Un air de flûte

444 Allegro ♩ = 126

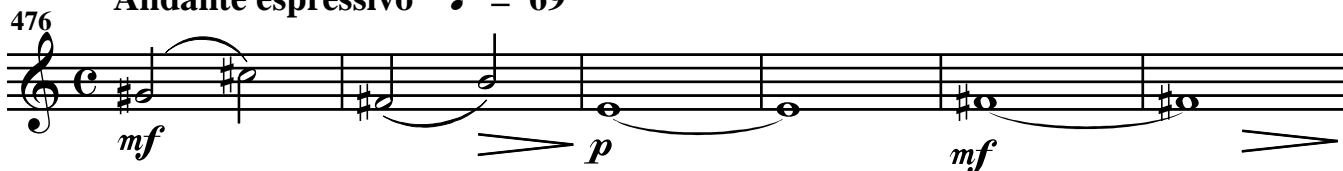
452 **A**460 **B**

468

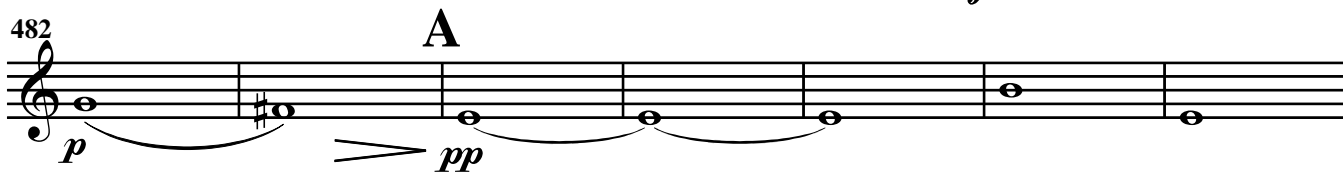


N° 8 - Nocturne

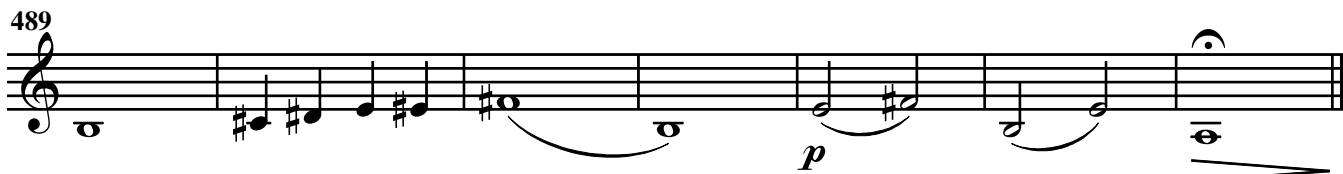
476 Andante espressivo ♩ = 69



482



489



N° 9 - Infernale poursuite

Presto ♩ = 132

496

mf

504

f

511

A

p *f*

519

p *mf*

526

B

ff

534

542

C *en ralentissant jusqu'à la fin*

mf

548

p

N° 10 - Les fantômes

Allegro ♩ = 116

554 *f*

559

565 **A**
mf *f* *mf* *f* *f*
reprise ad-libitum

571

578 **B**
p *mf*

585 *f*

N° 11 - Flûtinette (TACET)

591 Allegretto ♩ = 112

16

591

N° 12 - La course aux oies

607 Slow rock ♩ = 100

A

8

Allegro ♩ = 138

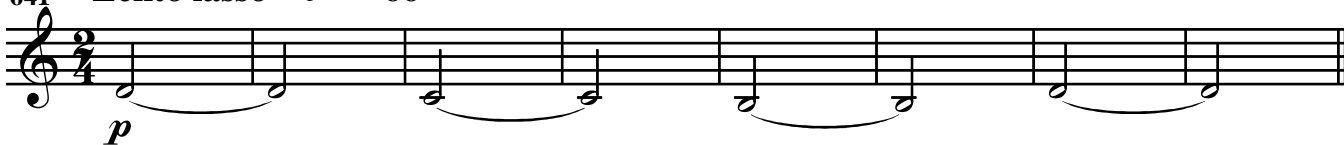
607 *p* **CODA**
pour finir

625 **B**
mf *f*

633 *rall...* **Lento**
ad-libitum **CODA** *p*

N° 13 - Pauvre renard

641 Lento lasso ♩ = 66



649 Più mosso ♩ = 100



659



N° 14 - Cortège des cadeaux

Marcia giocoso ♩ = 116



676



681 A



686



690



695



701



N° 15 - La leçon de vol

Menuet ♩ = 100

713 *f* *pp*

723 *f* *mf* **A**

731 *f*

Mazurka ♩ = 116

739 **3**

748 **B** *mf* *f*

755 **C** *mf* *f*

Valse ♩ = 66

762 *p*

771 **D** *mf*

781 **E** *f*

N° 16 - Un chien courageux

Allegro ♩ = 126

789 **8**

mf *f* *mf*

803 **Style tango**

f *p*

810 **A** **2**

p *f* *p*

816 **1** **2** **2**

p *f*

N° 17 - Un chien victorieux

Agitato ♩ = 132

823 *ff*

830 **A**

838 **B** **8**

852 **C** **6** **Meno mosso** ♩ = 96

p *f*

N° 18 - Les rats

Fox medium ♩ = 80

865 **A** 8 *f* *f* 4

881 **B** *f* *f* 3 *Faire la reprise 2 fois*

890 *p* 2 *p* *mf*

897 *f* *ff*

Detailed description: This block contains the musical notation for 'Les rats'. It consists of four staves. The first staff (865) is marked 'A' and contains an 8-measure rest followed by two eighth notes with accents and a dynamic of 'f'. The second staff (881) is marked 'B' and contains two eighth notes with accents and a dynamic of 'f', followed by a 3-measure rest and a repeat sign with the instruction 'Faire la reprise 2 fois'. The third staff (890) starts with a dynamic of 'p', has a 2-measure rest, and then a melodic line with dynamics 'p' and 'mf'. The fourth staff (897) starts with a dynamic of 'f', has a crescendo to 'ff', and ends with a fermata.

N° 19 - Flûte magique

Allegretto ♩ = 88

903 **A** 8 7

p

Detailed description: This block contains the musical notation for 'Flûte magique'. It consists of one staff (903) in 3/4 time. It starts with an 8-measure rest, followed by two dotted eighth notes with accents and a dynamic of 'p'. This is followed by a 7-measure rest and a fermata.

N° 20 - Ballet des grues

Introduction ♩ = 104 I. Andantino ♩ = 100

921 *f* *rall...* 15 *p* *mf* **A**

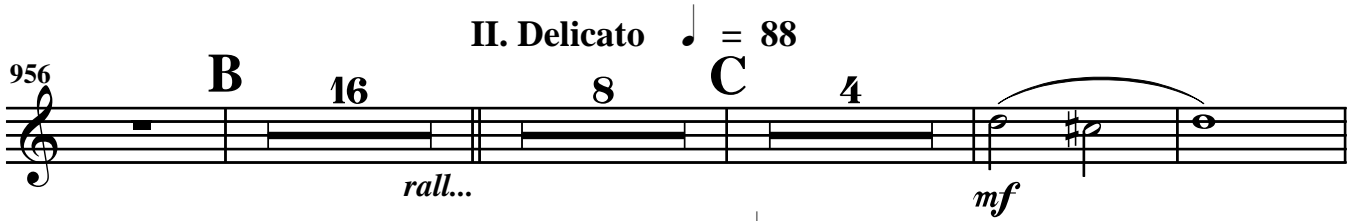
942

949 *f* *f* *f* *f*

Detailed description: This block contains the musical notation for 'Ballet des grues'. It consists of three staves. The first staff (921) starts with a dynamic of 'f', followed by a 'rall...' marking, a 15-measure rest, and a melodic line with dynamics 'p' and 'mf'. The second staff (942) continues the melodic line. The third staff (949) contains four eighth notes with accents and a dynamic of 'f'.

956 **B** 16 8 **C** 4

II. Delicato ♩ = 88



rall... mf


987 **D** 8 16 **E** 16 **F** 1 2 3 4

III. Allegro ♩ = 132



f

1033 5 6 7 8 1 2



mf

1043 3 4 5 6 7 8 9 10 11

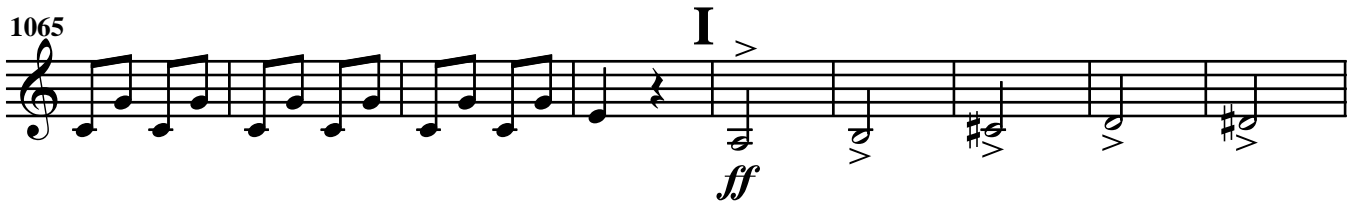


1053 **G** 4 **H**



f

1065 **I**



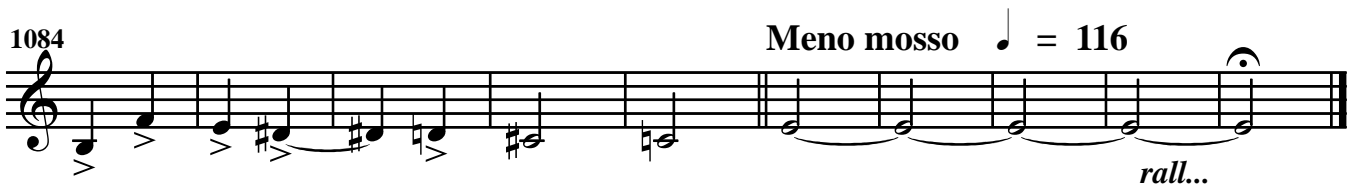
ff

1074 **J**



accelerando...

1084 **Meno mosso** ♩ = 116



rall...

N° 21 - Berceuse

Lento $\text{♩} = 56$

1094 *p*

1102 *mf* **A** 8

1118 *mf* **B** **C** 8

N° 22 - La joie de Nils

Allegretto grazioso $\text{♩} = 60$

1134 *mf*

1142 *mf* **A** 4 **B** 7

1157 *p* **C** *mf* *f*

N° 23 - La grotte

1165 Valse moderato $\text{♩} = 66$

f

1174 *mf* **A** *p* *rall...* **C**

1182 **Agitato** ♩ = 126

f *mf*

1187 **B**

f *mf*

1192 **C**

f

1199 *rall...* *p*

N° 24 - Les renards

1206 **Lento misterioso** ♩ = 80 **A**

p *ff* *p*

1212 *ff* *p*

1216 **Slow - fox** **6** **2** **B**

f *mf* *f* *f*

N° 25 - Le trou de l'enfer

Slow-rock ♩ = 120

1229

2

mf *p*

Detailed description: This system contains measures 1229 to 1236. It starts with a treble clef and a common time signature. A fermata is placed over the first two notes. A dynamic marking of *mf* is present, followed by a hairpin crescendo leading to a *p* dynamic. The key signature has one sharp (F#). The piece concludes with a double bar line and a 3/4 time signature.

Allegro ♩ = 120

1237

5

A

3

mf

Detailed description: This system contains measures 1237 to 1249. It begins with a treble clef and a 2/4 time signature. A fermata is over the first note. A dynamic marking of *mf* is shown. The system includes first ending 'A' (measures 1244-1246) and a second ending 'B' (measures 1247-1249). The key signature has one sharp (F#).

1250

B

f *stretto*

Detailed description: This system contains measures 1250 to 1257. It starts with a treble clef. A dynamic marking of *f* is present, followed by the instruction 'stretto' indicating a tempo change. The key signature has one sharp (F#).

Maestoso ♩ = 69

1258

ff *f*

Detailed description: This system contains measures 1258 to 1265. It begins with a treble clef and a common time signature. A dynamic marking of *ff* is shown, followed by a *f* dynamic. The key signature has one sharp (F#).

N° 26 - La bonne direction

Allegro ritmico ♩ = 120

1266

p

Detailed description: This system contains measures 1266 to 1269. It starts with a treble clef and a common time signature. A dynamic marking of *p* is present. The key signature has one sharp (F#).

1270

Detailed description: This system contains measures 1270 to 1273. It starts with a treble clef and a common time signature. The key signature has one sharp (F#).

1274 A

Detailed description: This system contains measures 1274 to 1277. It starts with a treble clef and a common time signature. The key signature has one sharp (F#).

1278

Detailed description: This system contains measures 1278 to 1281. It starts with a treble clef and a common time signature. The key signature has one sharp (F#). The piece concludes with a double bar line and a 3/4 time signature.

Valse ♩ = 66

1282

f *p*

Detailed description: This system contains measures 1282 to 1285. It starts with a treble clef and a 3/4 time signature. A dynamic marking of *f* is present, followed by a *p* dynamic. The key signature has one sharp (F#).

N° 27 - Ballet des cygnes

I. Présentation - Allegretto ♩ = 84

1387 5

f *mf*

Detailed description: Musical staff starting at measure 1387. It begins with a treble clef, a key signature of two sharps (F# and C#), and a common time signature (C). The melody starts with a half note G4, followed by quarter notes A4, B4, and C5. There is a dynamic marking of *f* under the first note and *mf* under the second. A slur covers the first four notes. The staff ends with a fermata over a whole note G4.

1399 **A** 6

f *f*

Detailed description: Musical staff starting at measure 1399. It begins with a treble clef, a key signature of two sharps, and a common time signature. The melody starts with a half note G4, followed by quarter notes A4, B4, and C5. There is a dynamic marking of *f* under the first note and *f* under the last note. A slur covers the first four notes. The staff ends with a fermata over a whole note G4.

II. Menuet ♩ = 108

1410 4

mf *f* *f* *mf*

Detailed description: Musical staff starting at measure 1410. It begins with a treble clef, a key signature of two sharps, and a 3/4 time signature. The melody starts with a half note G4, followed by quarter notes A4, B4, and C5. There is a dynamic marking of *mf* under the first note, *f* under the second, *f* under the third, and *mf* under the fourth. A slur covers the first four notes. The staff ends with a fermata over a whole note G4.

1420 **B**

f

Detailed description: Musical staff starting at measure 1420. It begins with a treble clef, a key signature of two sharps, and a common time signature. The melody starts with a half note G4, followed by quarter notes A4, B4, and C5. There is a dynamic marking of *f* under the first note. A slur covers the first four notes. The staff ends with a fermata over a whole note G4.

1429

p

Detailed description: Musical staff starting at measure 1429. It begins with a treble clef, a key signature of two sharps, and a common time signature. The melody starts with a half note G4, followed by quarter notes A4, B4, and C5. There is a dynamic marking of *p* under the first note. A slur covers the first four notes. The staff ends with a fermata over a whole note G4.

1436

f *mf*

(cresc : 2ème fois)

Detailed description: Musical staff starting at measure 1436. It begins with a treble clef, a key signature of two sharps, and a common time signature. The melody starts with a half note G4, followed by quarter notes A4, B4, and C5. There is a dynamic marking of *f* under the first note and *mf* under the last note. A slur covers the first four notes. The staff ends with a fermata over a whole note G4.

1444 **C**

f

Detailed description: Musical staff starting at measure 1444. It begins with a treble clef, a key signature of two sharps, and a common time signature. The melody starts with a half note G4, followed by quarter notes A4, B4, and C5. There is a dynamic marking of *f* under the first note. A slur covers the first four notes. The staff ends with a fermata over a whole note G4.

III. Fox-trot ♩ = 76

1453

mf

Detailed description: Musical staff starting at measure 1453. It begins with a treble clef, a key signature of two sharps, and a common time signature. The melody starts with a half note G4, followed by quarter notes A4, B4, and C5. There is a dynamic marking of *mf* under the first note. A slur covers the first four notes. The staff ends with a fermata over a whole note G4.

1459 **D**

f

Detailed description: Musical staff starting at measure 1459. It begins with a treble clef, a key signature of two sharps, and a common time signature. The melody starts with a half note G4, followed by quarter notes A4, B4, and C5. There is a dynamic marking of *f* under the first note. A slur covers the first four notes. The staff ends with a fermata over a whole note G4.

1464

1468

1473

N° 28 - Coups de becs

1478 Allegro con fuoco ♩ = 160

1478

1485

1491 **A** 4

1501 **B**

1507

Valse $\text{♩} = 72$

1513 **6**

mf

1525

1535 **C**

f

1543

N° 29 - Les corneilles cupides

Energico furioso $\text{♩} = 84$

1551

f *mf*

1558

1566 **A**

f *p*

1571

1578 **B**

1583 **C**

mf

Meno mosso ♩ = 80

1590

6 **D** 10

rall...

N° 30 - Final

Lento ♩ = 72 Più mosso Lento ♩ = 72

1610

8 4 4

ff *p*

1631

4

Allegro ♩ = 132

f

1641

1 2 3 4 5 6 7

1649

8 **A**

1657

1665

1675

B

1683

1691

1699

1708 **Valse** $\text{♩} = 72$

f

1718 **C** **Allegro** $\text{♩} = 132$

ff

1726

f

1734

1 2 3 4 5 6 7 8

1742 **D**

1750

1757

1766 **E**

accelerando..... *ff*