

Argument
Jean-Noël GENEST

Deuxième partie

Musique
Francis COITEUX

N° 16 - DORMIR EST PLUS SAGE

Andantino

pizz



6

Più lento
arco



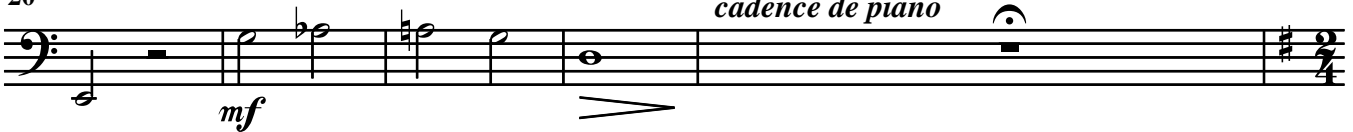
13

F'



20

cadence de piano



N° 17 - CORTÈGE DES CADEAUX

25 Allegro

25 *f* *mf*

34 *p*

43 *f* *p*

51 *f* *p* *f* **G'**

60 *p* *f* *mf* pizz

70 *f* *mf* *arco* *pizz* **H'**

79 *mf*

88 *f* *arco* **I'**

97 *mf* *f*

N° 18 - BALLET DES CADEAUX

Valse caprice Valse chaleureuse

106 *f* *p*

120 *f* *p*

128 **J'**
f *p*

136
mf *f*

146 **pizz**
mf

155
f *mf* *mf*

164 **arco**
f *p*

172 **K'**
f *p*

180 **K'**
Musical staff with bass clef and key signature of two sharps (F# and C#). The staff contains a melodic line with dynamic markings *f*, *p*, and *mf*. A slur covers the first two measures, and another slur covers the last two measures.

189
Musical staff with bass clef and key signature of two sharps. The staff contains a melodic line with dynamic markings *f* and *ff*. A slur covers the first two measures, and another slur covers the last two measures.

197
Musical staff with bass clef and key signature of two sharps. The staff contains a melodic line with dynamic markings *p* and *ff*. A slur covers the first two measures, and another slur covers the last two measures.

205 **L'**
Musical staff with bass clef and key signature of two sharps. The staff contains a melodic line with dynamic markings *p* and *ff*. A slur covers the first two measures, and another slur covers the last two measures.

213
Musical staff with bass clef and key signature of two sharps. The staff contains a melodic line with dynamic markings *p* and *f*. A slur covers the first two measures, and another slur covers the last two measures.

222 **M'**
Musical staff with bass clef and key signature of two sharps. The staff contains a melodic line with dynamic markings *p*, *f*, and *p*. A slur covers the first two measures, and another slur covers the last two measures.

229
Musical staff with bass clef and key signature of two sharps. The staff contains a melodic line with dynamic markings *mf*. A slur covers the first two measures, and another slur covers the last two measures.

239 **N'**
Musical staff with bass clef and key signature of two sharps. The staff contains a melodic line with dynamic markings *f*. A slur covers the first two measures, and another slur covers the last two measures.

248
Musical staff with bass clef and key signature of two sharps. The staff contains a melodic line with dynamic markings *p* and *f*. A slur covers the first two measures, and another slur covers the last two measures.

256 **O'**
Musical staff with bass clef and key signature of two sharps. The staff contains a melodic line with dynamic markings *p* and *f*. A slur covers the first two measures, and another slur covers the last two measures.

264
Musical staff with bass clef and key signature of two sharps. The staff contains a melodic line with dynamic markings *p* and *f*. A slur covers the first two measures, and another slur covers the last two measures.

272 **P'** 4 *p* *f* *p*

281 *f* *p*

289 **Q'** 4 *p*

300 *mf* *f*

N° 19 - BONNE HUMEUR ET PIQUE-NIQUE

307 **Moderato** 8 **R'** *p*

N° 20 - C'EST LA GUERRE ?!

321 **Dramatico** **Allegro** **pizz** 3 *mf*

329

335 *f*

340 **S'** *ff* *mf*

346 *f* *mf*

352 *f* 2 **T'**

359 T' 8 U'

mf *f* *mf*

372

ff *f* *ff* *p* *f*

377 V'

p *f* *p* *f*

382

p *f*

387 Più mosso arco

mf *ff* *mf* *ff* *mf*

393

399 W'

f

N° 21 - BALLET DES BRICOLEURS

405 pizz Allegro 7 sempre pizz

ff *f*

416

421

mf

426

431 X'

f

437

443

sempre pizz
mf

448

454 Y'

f

460 Z'

f

466

472

mf

N° 22 - LA MAISON DE GASTON

478

1 2
Moderato
arco
rall... *p*

484

mf

488 A''

p

494

cadenza de piano

N° 23 - PREMIÈRE VISITE

Andantino

503 pizz *p*

508 **B''**

513

N° 24 - JOIE DE GASTON

Allegro

518 *f* *accel.*

527 **C''** *p* *f*

537 **D''** *mf*

N° 25

BALLET DE LA SÉDUCTION

Moderato

546

554 **2** Valse lente arco *p*

562 *mf*

570 **E''** *p* *mf* *p*

578 *f*

586 *pizz*
p *f*

592 **F''**

601 *arco* **Più mosso**
ff

608 *mf*

616 **G''**
f *mf* *f* *ff*

624 *mf*

633 *f*

N° 26 - LE PAS DES AMOUREUX

639

Poco più mosso

Musical notation for measure 639, bass clef, 3/4 time signature. The staff contains a series of dotted half notes. Dynamics: *p* at the start, *f* in the middle, and *p* at the end. A hairpin crescendo and decrescendo are shown.

648

Musical notation for measure 648, bass clef, 3/4 time signature. The staff contains a series of dotted half notes. Dynamics: *f* in the middle, *p* at the end. A hairpin decrescendo is shown. A first ending bracket labeled **H''** is placed over the final notes.

657

Musical notation for measure 657, bass clef, 3/4 time signature. The staff contains a series of dotted half notes. Dynamics: *f* in the middle. A hairpin crescendo is shown.

666

Musical notation for measure 666, bass clef, 3/4 time signature. The staff contains a series of dotted half notes. Dynamics: *mf* in the middle, *p* at the end. A hairpin decrescendo is shown. A first ending bracket labeled **1** and **2** is placed over the final notes. The tempo marking **Meno mosso** is present.

673

Musical notation for measure 673, bass clef, 3/4 time signature. The staff contains a series of dotted half notes. A hairpin decrescendo is shown.

680

Musical notation for measure 680, bass clef, 3/4 time signature. The staff contains a series of dotted half notes. Dynamics: *p* at the start, *f* at the end. A hairpin crescendo is shown.

688

Grandioso

Musical notation for measure 688, bass clef, 3/4 time signature. The staff contains a series of dotted half notes. Dynamics: *ff* at the start, *p* at the end. A hairpin decrescendo is shown.

N° 27 - BALLET DE L'AMITIÉ

696

Allegro

pizz

Musical notation for measure 696, bass clef, 2/4 time signature. The staff contains a series of quarter notes. Dynamics: *f* at the start. A first ending bracket labeled **I''** is placed over the final notes.

706

Musical notation for measure 706, bass clef, 2/4 time signature. The staff contains a series of quarter notes. Dynamics: *ff* at the end. A first ending bracket labeled **1** and **2** is placed over the final notes. A second ending bracket labeled **J''** is placed over the final notes.

716

Musical notation for measure 716, bass clef, 2/4 time signature. The staff contains a series of quarter notes. Dynamics: *ff* at the end. A first ending bracket labeled **K''** is placed over the final notes.

725

Musical notation for measure 725, bass clef, 2/4 time signature. The staff contains a series of quarter notes. Dynamics: *p* at the start, *mf* at the end. A first ending bracket labeled **1** and **2** is placed over the final notes. The tempo marking **arco** is present.

734 *f* arco pizz

742 *f* arco 1 2 *p* L'' pizz *ff*

750

757 1 2 arco

N° 28 - C'EST L'HEURE DE L'ÉCOLE

764 Moderato Allegro (à 1 temps) *ff* *mf*

775

785 Moderato *ff*

N° 29 - SOLO FINAL DE GASTON

794 pizz Valse con tenerezza *mf* M''

804 Moderato arco *p*

814 pizz Java *mf* *p*

N° 30 - GASTON S'ENDORT, HEUREUX...

823 arco Lento *mf* rall... *p* *mf*

833 N'' *p* *pp*