

CONVERSATION

Concerto grosso pour Sextuor de Clarinettes
et Orchestre d'Harmonie

Contrebasse Sib

Francis COITEUX

Allegro giocoso $\text{♩} = 132$

12 A 12 B 12 C 20 D



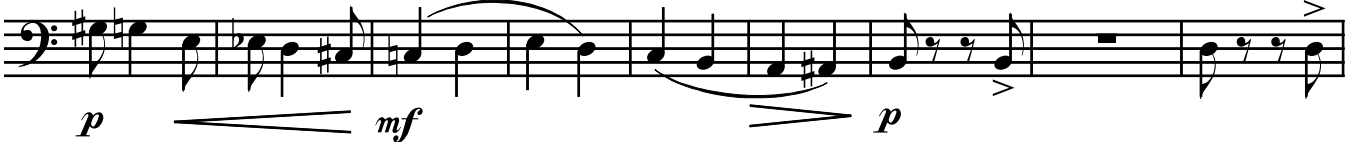
59



67



79



88



97 F

Meno mosso capriccioso $\text{♩} = 112$



123 G

20 H



151



173 **Tempo primo** ♩ = 132

f

Detailed description: Musical staff 173-180. Bass clef, 2/4 time. Starts with a forte (*f*) dynamic. The music consists of eighth and sixteenth notes with various accidentals. A crescendo hairpin is present at the end of the staff.

181 **J 13 K 6**

p

Detailed description: Musical staff 181-198. Bass clef, 2/4 time. Features rests for 13 measures (J) and 6 measures (K). Dynamics range from piano (*p*) to mezzo-forte (*mf*). Includes a crescendo hairpin.

207 **L**

f

Detailed description: Musical staff 207-214. Bass clef, 2/4 time. Starts with a forte (*f*) dynamic. The music features eighth and sixteenth notes with various accidentals. A crescendo hairpin is present.

215 **8 M**

f *p*

Detailed description: Musical staff 215-229. Bass clef, 2/4 time. Features a rest for 8 measures (M). Dynamics range from forte (*f*) to piano (*p*). Includes a crescendo hairpin.

230 **7 N**

f *mf* *p*

Detailed description: Musical staff 230-243. Bass clef, 2/4 time. Features a rest for 7 measures (N). Dynamics range from forte (*f*) to piano (*p*). Includes a crescendo hairpin.

244 **O 12 P 13 Q**

f

Detailed description: Musical staff 244-274. Bass clef, 2/4 time. Features rests for 12 measures (O) and 13 measures (P). Ends with a forte (*f*) dynamic. Includes a crescendo hairpin.

275 1 2 3 4 5 6 7 8 3

Detailed description: Musical staff 275-285. Bass clef, 2/4 time. Features rests for 1, 2, 3, 4, 5, 6, 7, 8, and 3 measures. Ends with a common time signature (C).

286 **Moderato cantabile** ♩ = 92

p *mf*

Detailed description: Musical staff 286-292. Bass clef, 2/4 time. Starts with a piano (*p*) dynamic. Features rests for 2 measures. Dynamics range from piano (*p*) to mezzo-forte (*mf*).

293 **R**

p *mf* *p* *mf*

Detailed description: Musical staff 293-298. Bass clef, 2/4 time. Dynamics range from piano (*p*) to mezzo-forte (*mf*). Includes a crescendo hairpin.

299 **Più mosso con spirito** ♩ = 112

p *f*

Detailed description: Musical staff 299-304. Bass clef, 2/4 time. Starts with a piano (*p*) dynamic. Features rests for 5 and 2 measures. Dynamics range from piano (*p*) to forte (*f*).

Moderato espressivo ♩ = 88

310 S 10 12 T

f *pp*

337

Scherzo leggero ♩ = 72

343 8 U 8 V

364 4 W 8 16 X 6 Presto con brio ♩ = 144

p *f*

400 12 Y 19 Z 13 A' 12

458 B' 13 C' 11 D' 12

f *p*

499 E' 11 F' 12 G'

f

529

ff