

Clarinette basse

# Sib SYMPHONIE DES ALPAGES

pour Orchestre d'Harmonie

inspirée de l'oeuvre autobiographique de Michelle CHATELAIN : "Alpages, terres de l'été"

Francis COITEUX

## 1 - La transhumance

Allegro giocoso

8

14

21 A

26

32 B

38 C 3

*f*

*mf*

*f*

*mf*

*f*

*mf*

*p*

*mf*

*p*

*f*

49 *mf* *f*

57 *mf* *f* **D**

63 *mf* *f*

69 **Più mosso** *ff* *mf* *p* *revenir au tempo progressivement.....*

## 2 - La neige

79 **Moderato** *p*

86 *mf*

93 *f* *mf* **E**

99 *p* *mf*

107 *f* *mf* **F**

114 *p* *mf* **G**

121 H

128

### 3 - Le vent

Allegretto leggiero

135 12 I

*p*

153 *en dehors* 6 6 6 6 J 2

*p*

158 K

*mf* *mf*

168 6 L

*p* *mf* *p*

183 M 2

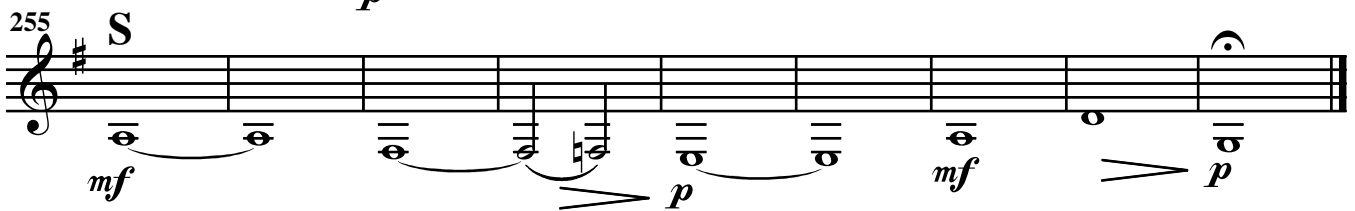
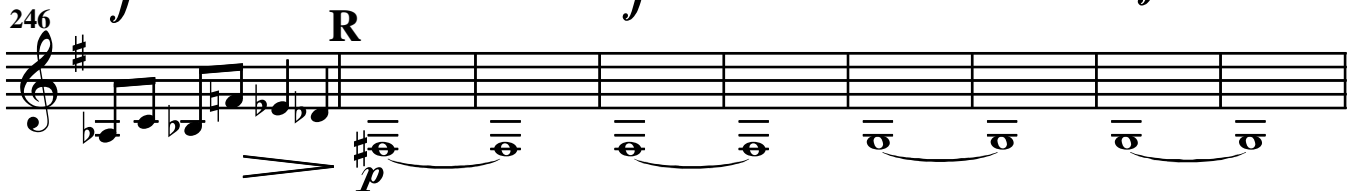
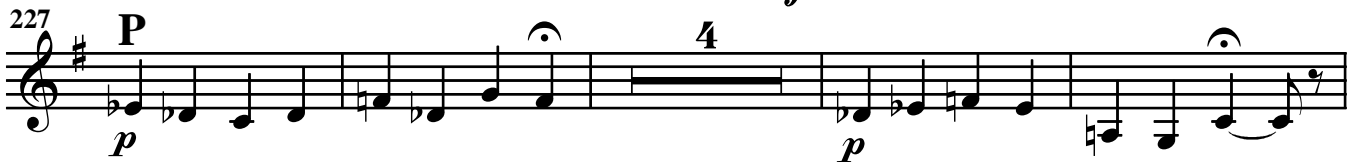
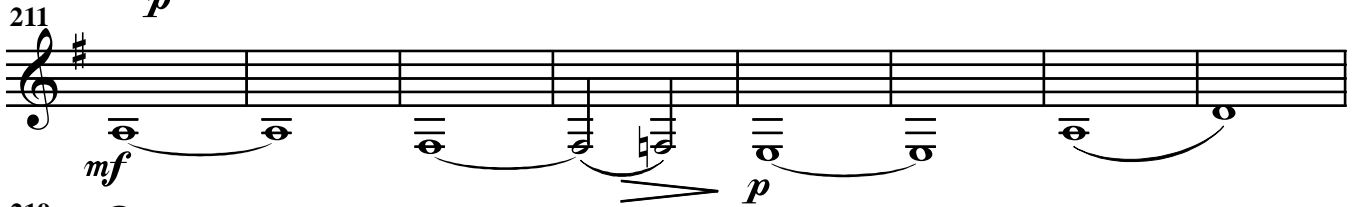
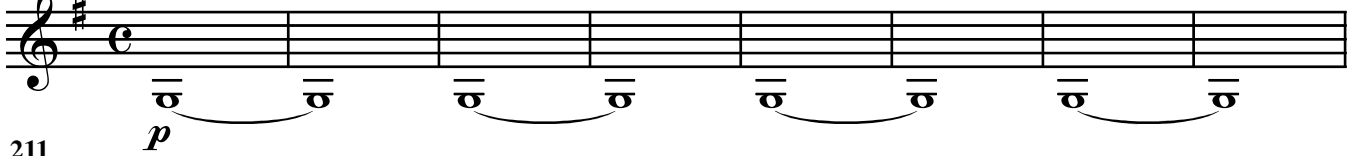
*mf* *p* *mf*

193 N 3

*p* *pp*

## 4 - La prière du soir

203 Andante semplice



## 5 - Le feu de camp

264 Allegro giocoso



288

296

304

311

320

328

335

342

351

361

369

376

### 6 - Le clair de lune

Andante immateriale

384 **9** A' **11** B' *f*

409 ,C'

416 **D' 8** **E' 5** *en dehors* *p* *pp*

Detailed description: This block contains the musical notation for the first movement, 'Le clair de lune'. It consists of three staves of music. The first staff starts at measure 384 with a treble clef and a common time signature. It features a melodic line with notes A' and B', marked with a forte (f) dynamic. The second staff continues the melody, including a note C'. The third staff starts at measure 416 and includes notes D' and E', with a dynamic marking of piano (p) that transitions to pianissimo (pp). The phrase 'en dehors' is written above the staff. There are also some performance markings like a hairpin and a fermata.

### 7 - L'orage

Moderato tenebrosos

435 *p*

442 *p*

449 **2** F' *mf*

457 **2** G' *mf*

465 *p*

471 *mf* *f* *mf*

Detailed description: This block contains the musical notation for the second movement, 'L'orage'. It consists of seven staves of music. The first two staves (measures 435-442) feature a series of chords in the bass register, marked with a piano (p) dynamic. The third staff (measures 449-457) includes a melodic line with notes F' and G', marked with a mezzo-forte (mf) dynamic. The fourth staff (measures 465-471) continues the melodic development with notes F' and G', marked with a piano (p) dynamic. The final staff (measures 471 onwards) shows a dynamic progression from mezzo-forte (mf) to forte (f) and back to mezzo-forte (mf). There are various performance markings including slurs, hairpins, and accents.

479 **H'**

*ff* *p*

Musical staff for measure 479, starting with a treble clef and a key signature of one sharp (F#). The staff contains a melodic line with various note values and rests. A dynamic marking of *ff* is placed below the first few notes, and a dynamic marking of *p* is placed below a later section of the staff. A slur is present under the final notes of the staff.

485

*ff*

Musical staff for measure 485, starting with a treble clef and a key signature of one sharp (F#). The staff contains a melodic line with various note values and rests. A dynamic marking of *ff* is placed below the first few notes.

489

Musical staff for measure 489, starting with a treble clef and a key signature of one sharp (F#). The staff contains a melodic line with various note values and rests.

493 **I'**

Musical staff for measure 493, starting with a treble clef and a key signature of one sharp (F#). The staff contains a melodic line with various note values and rests.

497

Musical staff for measure 497, starting with a treble clef and a key signature of one sharp (F#). The staff contains a melodic line with various note values and rests.

501 **J'**

*mf*

Musical staff for measure 501, starting with a treble clef and a key signature of one sharp (F#). The staff contains a melodic line with various note values and rests. A dynamic marking of *mf* is placed below the first few notes. A slur is present under the final notes of the staff.

509 **K'** *rallentando poco a poco, fino alla fine...*

*p*

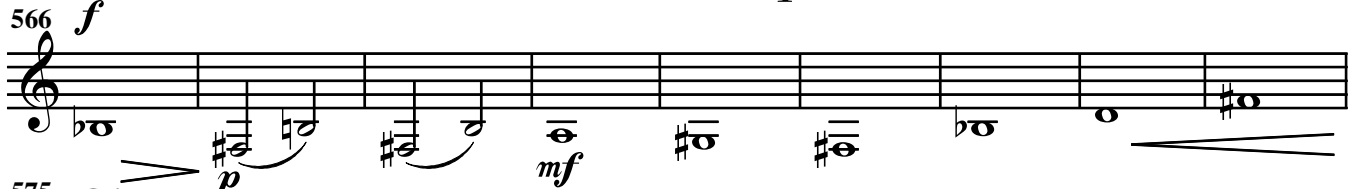
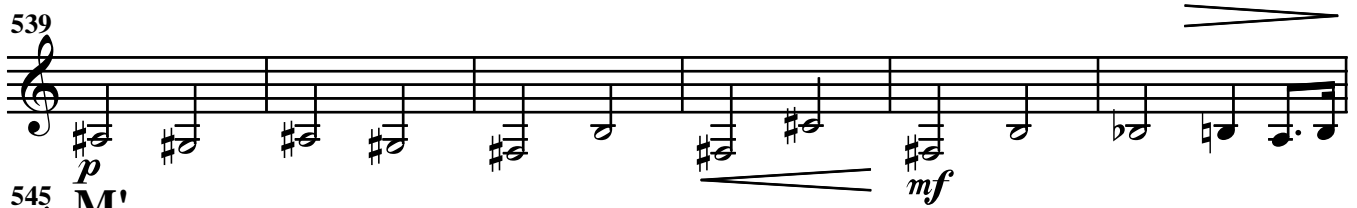
Musical staff for measure 509, starting with a treble clef and a key signature of one sharp (F#). The staff contains a melodic line with various note values and rests. A dynamic marking of *p* is placed below the first few notes. A slur is present under the final notes of the staff.

517

*pp*

Musical staff for measure 517, starting with a treble clef and a key signature of one sharp (F#). The staff contains a melodic line with various note values and rests. A dynamic marking of *pp* is placed below the first few notes. A slur is present under the final notes of the staff.

## 8 - La beauté

525 *a poco maestoso*



592

*mf* *f*

599

*p* Q'

605

*mf* *f*

611 Più mosso

*ff* R'

619